



**TRNC  
AIS**

**AIRAC  
AIP**

**Amendment 02  
01 JUL 2021**

TURKISH REPUBLIC OF NORTHERN CYPRUS MINISTRY OF COMMUNICATION AND PUBLIC WORKS CIVIL AVIATION DEPT. (CAD) ERCAN KKTC (via MERSİN 10 TURKEY)  
PHONE : 90 (392) 231 41 69 FAX : 90 (392) 231 46 20 AFS : LCENYAYX via LTACERCX

**YÜRÜRLÜK TARİHİ: 12 AĞUSTOS 2021 / EFFECTIVE DATE: 12 AUG 2021**

**AIRAC HAVACILIK BİLGİ YAYINI DÜZELTMESİ NO: 02/21  
AIRAC AMENDMENT NR: 02/21 TO AERONAUTICAL INFORMATION PUBLICATION.**

**Aşağıdaki sayfaları çıkartınız.  
Destroy the following pages.**

**Aşağıdaki sayfaları yerleştiriniz.  
Insert the following pages.**

**ENR 5.5-1 16 AUG 18**

**ENR 5.5-1 12 AUG 21**

**AD 2 LCEN IAC-5 22 APR 21  
AD 2 LCEN IAC-6 22 APR 21**

**AD 2 LCEN IAC-5 12 AUG 21  
AD 2 LCEN IAC-6 12 AUG 21**

**İPTAL EDİLEN NOTAM'LAR / NOTAMs CANCELLED :**

**'K' SERİSİ : 0089/21, 0091/21, 0207/21.**

**SERIES 'N' : 0101/21, 0103/21, 0252/21.**

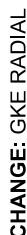
**SON/THE END**

**ENR 5.5 HAVACILIK SPORLARI VE EĞLENCEYE YÖNELİK AKTİVİTELER**  
**ENR 5.5 AERIAL SPORTING AND RECREATIONAL ACTIVITIES**

Designation and lateral limits	Vertical limits	Operator/User Phone Nr.	Remarks and time of ACT
1	2	3	4
Yamaç paraşütü / Parachute Jumping Area: 351850N0331410E, 352050N0331400E, 352040N0331625E, 351850N0331645E	<u>3000 FT AMSL</u> SFC	-	Hergün / Daily SR/SS FEB01 - OCT 31

APP	127.750	AD ELEV	402 FT
TWR	120.450 - 120.250 - 120.375	TRANSITION ALTITUDE 6000 FT	
ATIS	118.350		

**LEFKOŞA/ERCAN  
ILS/DME  
RWY 29**



NM to/from IHR RWY 29				
OCA (H)	A	B	C	D
Straight-in Approach	556' (200')			
GP Inoperative	830' (474')			
Circling	900' (498')		1100' (698')	

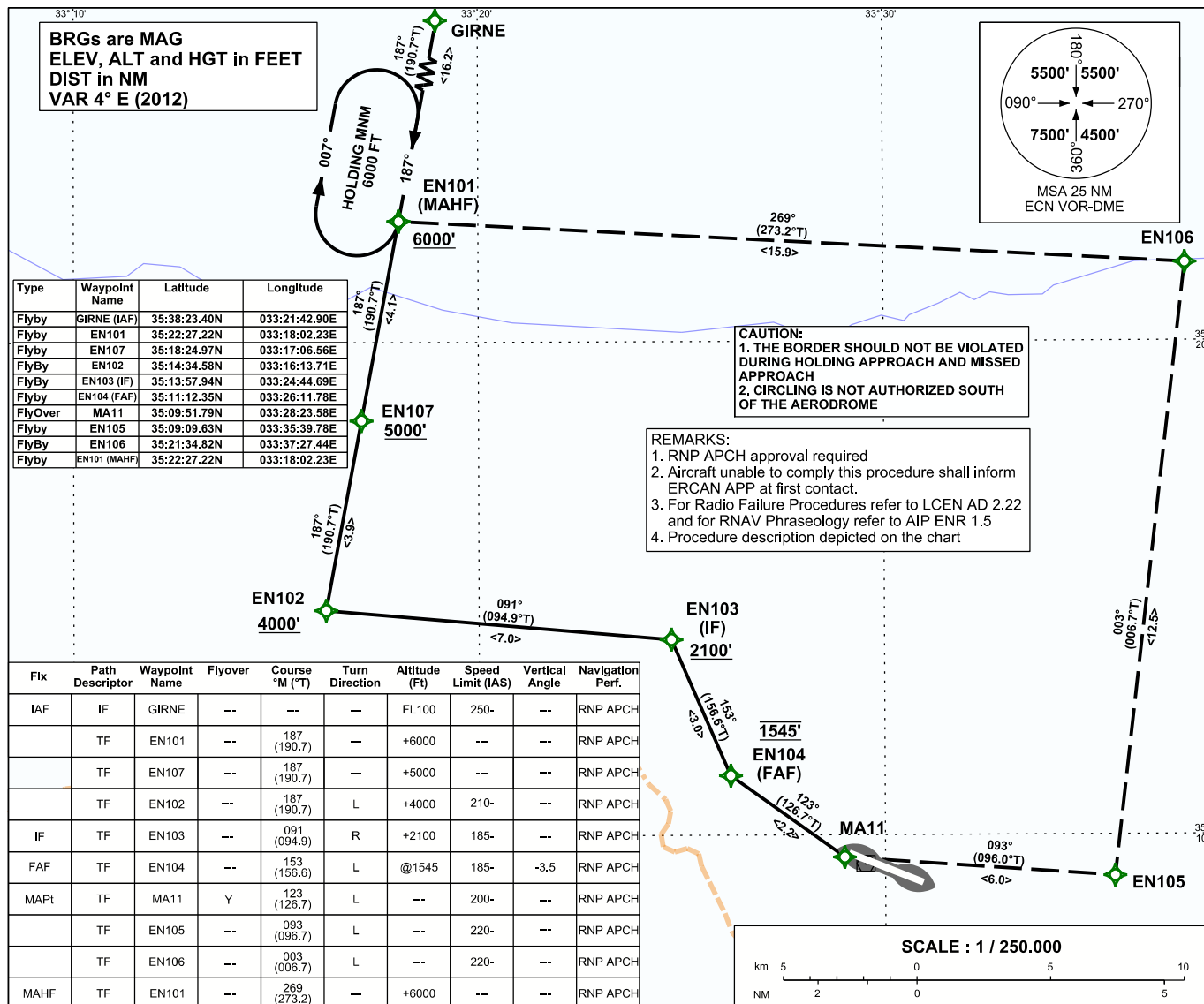
**NOTES:**

- INTERCEPT GP AT 8.2 DME (VOR)  
7.1 DME (GP)
- ILS RDH 55 FT

LEFKOŞA/ERCAN  
RNP  
RWY 11

APP	127.750	AD ELEV	402 FT
TWR	120.450 - 120.250 - 120.375	TRANSITION ALTITUDE	6000 FT
ATIS	118.350		

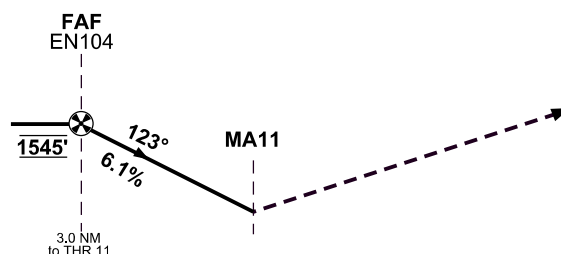
INSTRUMENT  
APPROACH  
CHART - ICAO



#### MISSED APPROACH

CLIMB TO 6000 FT FROM MA11 TURN LEFT  
INBOUND TO EN105, THEN TURN LEFT TO EN106,  
THEN TURN LEFT TO EN101 AND JOIN THE HOLDING.

**MA11 [K200;-L]-EN105[K220;-L]-EN106[K220;-L]-EN101 (MAHF)**



RWY 11 THR ELEV 383 FT

NM to/from THR RWY 11																																	
12 11 10 9 8 7 6 5 4 3 2 1 0 1 2 3 4 5 6 7 8 9																																	
OCA (H)				A		B		C		D		DIST to THR		2		1		Timing not authorized for defining the MAPt.															
LNAV				830' (447')								ALTITUDE		1175		805																	
Circling				900' (498')				1100' (698')				GS (Ground Speed)		kt		80								100		120		140		160		180	
												FAF-THR (3.0 NM)		MIN:SEC		2:15								1:48		1:30		1:17		1:08		1:00	
												Rate of Descent (6.1%)		Ft/MIN		494								618		741		865		988		1112	