



TRNC
AIS

AIRAC
AIP

Amendment 05
21 SEP 2023

TURKISH REPUBLIC OF NORTHERN CYPRUS MINISTRY OF PUBLIC WORKS AND TRANSPORTATION DIRECTORATE OF CIVIL AVIATION DEPARTMENT
ERCAN TRNC (via MERSİN 10 TÜRKİYE)
PHONE : +90 (392) 231 41 69 FAX : +90 (392) 231 46 20 AFS : LCENYAYX via LTACERCX E-MAIL: arxiv.havacilik@gov.ct.tr

YÜRÜRLÜK TARİHİ: 02 KASIM 2023 / EFFECTIVE DATE: 02 NOV 2023

AIRAC HAVACILIK BİLGİ YAYINI DÜZELTMESİ NO: 05/23

AIRAC AMENDMENT NR: 05/23 TO AERONAUTICAL INFORMATION PUBLICATION.



Aşağıdaki sayfaları çıkartınız.
Destroy the following pages.

ENR 3.1-5	21 JUL 16
ENR 3.2-1	07 MAR 13
ENR 4.4-1	21 JUL 16
ENR 6-1	21 JUL 16
AD 0.6-1	01 FEB 18
AD 1.3-1	01 FEB 18
AD 2 LCEN-8	07 SEP 23
AD 2 LCEN IAC-9	07 SEP 23
AD 2 LCEN ADC	07 SEP 23
AD 2 LCEN PRKG	07 SEP 23

Aşağıdaki sayfaları yerleştiriniz.
Insert the following pages.

ENR 3.1-5	02 NOV 23
ENR 3.2-1	02 NOV 23
ENR 4.4-1	02 NOV 23
ENR 6-1	02 NOV 23
AD 0.6-1	02 NOV 23
AD 1.3-1	02 NOV 23
AD 2 LCEN-8	02 NOV 23
AD 2 LCEN IAC-9	02 NOV 23
AD 2 LCEN ADC	02 NOV 23
AD 2 LCEN PRKG	02 NOV 23
AD 3 LCIK-1	02 NOV 23
AD 3 LCIK-2	02 NOV 23
AD 3 LCIK-3	02 NOV 23
AD 3 LCIK-4	02 NOV 23
AD 3 LCIK-5	02 NOV 23
AD 3 LCIK-6	02 NOV 23
AD 3 LCIK-7	02 NOV 23
AD 3 LCIK ADC	02 NOV 23

SON/THE END

Route designator Name of significant points Coordinates	Track MAG	DIST NM	Upper limits Lower limits or Minimum Altitude	Lateral Limits (NM)	Direction of cruising levels		Remarks Controlling Unit Channel
					Odd	Even	
1	2		3	4	5		6
W 84							
▲ YAPZU							
364331N-0342707E							
△ UMDOT							
362257N-0331713E	<u>246</u> 066	59.9	<u>FL285</u> FL095	10			

ENR 3.2 UPPER ATS ROUTES

Route designator Name of significant points Coordinates	Track MAG	DIST NM	Upper limits Lower limits or Minimum Altitude	Lateral Limits (NM)	Direction of cruising levels		Remarks Controlling Unit Channel
					Odd	Even	
1	2		3	4	5		6
UW 83							
▲ ANTALYA VOR (AYT)	<div>111 291</div> <div>30.2</div> <div>17.2</div> <div>13.3</div> <div>73.5</div> <div>FL660 FL285</div> <div>10</div> <div>↓</div> <div>↑</div> <div>a) This ATS route is used BTN SS/SR. b) Not used during activity in LTD8. - This route will only be authorized for traffic to or from ERCAN (LCEN) airport.</div>						
365514N-0304740E							
▲ MANAV							
364156N-0312128E							
▲ GELKI							
363443N-0314051E							
▲ VEMEK							
362820N-0315520E							
▲ DOREN (FIR BDRY)							
355556N-0331658E							

Route designator Name of significant points Coordinates	Track MAG	DIST NM	Upper limits Lower limits or Minimum Altitude	Lateral Limits (NM)	Direction of cruising levels		Remarks Controlling Unit Channel
					Odd	Even	
1	2	3	4	5	6		
UW 84							
▲ YAPZU							
364331N-0342707E							
△ UMDOT							
362257N-0331713E							
	246 066	59.9	FL660 FL285	10	↓	↑	

ENR 4.4 NAME-CODE DESIGNATORS FOR SIGNIFICANT POINTS

Name-code designator	Coordinates Converted in WGS-84	ATS route or other route
1	2	3
ADASU	364504N 0312320E	N/UN135
ALSUS	350206N 0343739E	R18, R78, B545, L/UL620,
ATSUB	363505N 0313721E	U/UT336
BALMA	342900N 0350300E	B545, L/UL620, R655, UM601 FIR BDRY
BARIS	343539N 0343859E	R655, UM601 FIR BDRY
BATNU	360939N 0324326E	W/UW83, N/UN131
BEPTO	361611N 0320312E	T/UT277
DASNI	353700N 0305100E	A/UA16, R19, M/UM601, M/UM855
DERYA	362456N 0304843E	A16, M/UM855
DOREN	355556N 0331658E	FIR BDRY, A28, W83, N/UN131
EDISI	365057N 0300847E	UT39
ELROP	363022N 0323912E	T/UT339
EVENO	355000N 0300000E	R19, M/UM601 FIR BDRY
EVKIT	361540N 0334516E	B/UB545, L/UL619, L/UL620
EVKOR	362544N 0320000E	T/UT336
GELKI	363443N 0314051E	W83, N/UN131
GIRNE	353823N 0332142E	A28
KETEK	365316N 0322842E	UT38
KULOL	364059N 0313537E	N/UN135
LEFKE	350656N 0324559E	R19, UM601 FIR BDRY

Name-code designator	Coordinates Converted in WGS-84	ATS route or other route
1	2	3
MANAV	364156N 0312128E	W83, N/UN131
MEDIT	351039N 0305319E	A16 FIR BDRY
MERAM	360211N 0331713E	A28
MURAT	345628N 0340859E	R78 FIR BDRY
NEKES	360913N 0331705E	N/UN135, A28
NIKAS	351131N 0354259E	FIR BDRY, R78, L/UL619,
SAHIL	344320N 0342829E	R18 FIR BDRY
TOMBI	360226N 0304928E	FIR BDRY, A16, M/UM855, T/UT39
TUKTU	362005N 0324258E	N/UN135
UMDOT	362257N 0331713E	W/UW84
UTUSO	362659N 0314238E	T/UT277
VADUS	350423N 0320329	R19, UM601
VEMEK	362820N 0315520E	W83, N/UN131
VESAR	355456N 0340058E	FIR BDRY, B545, L/UL619, L/UL620, N/UN135, UT38
YAPZU	364331N 0342707E	W/UW84



PART 3 AERODROMES (AD)

AD.0

AD 0.1 PREFACE - Not applicable

AD 0.2 RECORD OF AIP AMENDMENTS - Not applicable

AD 0.3 RECORD OF AIP SUPPLEMENTS - Not applicable

AD 0.4 CHECKLIST OF AIP PAGES - Not applicable

AD 0.5 LIST OF HAND AMENDMENTS TO THE AIP - Not applicable

AD 0.6 TABLE OF CONTENTS TO PART 3 AD 0.6-1

AD 1 AERODROMES/HELIPORTS - INTRODUCTION

AD 1.1-1

AD 1.1 Aerodrome/Heliport availability

AD 1.1-1

AD 1.1.1 General conditions under which aerodromes/heliports and associated facilities are available for use

AD 1.1-1

AD 1.1.2 Hours of operation

AD 1.1-3

AD 1.1.3 Availability of ground services

AD 1.1-3

AD 1.1.4 Applicable ICAO documents

AD 1.1-4

AD 1.2 Rescue and fire fighting services and snow plan

AD 1.2-1

AD 1.2.1 Rescue and fire fighting services

AD 1.2-1

AD 1.2.2 Snow plan

AD 1.2-1

AD 1.3 Index to aerodromes and heliports

AD 1.3-1

AD 1.4 Grouping of aerodromes/heliports

AD 1.4-1

AD 2 AERODROMES

INTERNATIONAL

LEFKOŞA / Ercan

LCEN AD 2.1

GAZİ MAĞUSA / Geçitkale

LCGK AD 2.1

AD 3 HELIPORTS

I GİRNE / KARTER

LCIK AD 3.1

AD 1.3 INDEX TO AERODROMES AND HELIPORTS

	Type of traffic permitted to use the aerodrome/heliports			
Aerodrome/heliport name Location indicator	International - National (INTL-NTL)	IFR-VFR	S: Scheduled N: Non-scheduled P: Private M: Military	Refence to AD Section and remarks
1	2	3	4	5
AERODROMES				
INTERNATIONAL				
LEFKOŞA/ERCAN	INTL-NTL	IFR-VFR	S - N - P	AD 2-LCEN
GAZİMAĞUSA/GEÇİTKALE	INTL-NTL	IFR-VFR	S - N - P	AD 2-LCGK
HELIPORTS				
GİRNE / KARTER*	NTL	IFR-VFR	M-N-P	AD 2-LCIK
* Prior Permission Required				

d) Motor Testi yapılacak yerde tüm emniyet tedbirini almak ve motor test çalışması yapmadan önce ilgili FOD kontrolü yapmak ilgili şirketin sorumluluğundadır.

2.EĞİTİM VE TEST UÇUŞLARI

Yoğun trafik nedeniyle eğitim ve test amaçlı iniş-kalkış çalışmalarına, meydan turu, alet alçalması ve touch and go ön izin alınarak yapılabilmektedir.

3.YER HAREKETLERİ

ATC tarafından verilen talimatlar hassasiyetle yerine getirilmelidir. RTF aktarımları net, anlaşılır, kısa ve öz olmalıdır.

4.MEYDAN KULLANMA TEDBİRLERİ

-Kullanış şekli: ATC ünitelerince aksi bildirilmedikçe 11L pistine meydan turu Kuzeyden olacaktır.

-Düşük görüş şartlarında ihtiyaç duyulması halinde follow-me hizmeti verilmekte olup, yönlendirme ATC tarafından yapılacaktır.

5.KALKIŞLAR

Pilotlar ilk temaslarını şu şekilde yapacaklardır:

a) Çağrı adı + Stand Pozisyonu + ATIS bilgisini aldıklarını teyit eden Kod.

b) Push-back ve motor çalıştırma müsaadesini almış trafik, en geç 1 dakika içerisinde push-back'e başlamalıdır. Aksi takdirde ATC tarafından muhtemel motor çalıştırma zamanı verilecektir.

c) Pilotlar Kalkış için piste girene kadar gerekli kontrolleri tamamlamış ve pist içindeki kontrollerini minimuma indirmiş olmalıdırlar. Pilotların müsaadelere 10 saniye içerisinde reaksiyon göstermesi beklenir; aksi takdirde ATC pist işgalini engellemek için söz konusu uçağa

d) Kalkış için piste giriş müsaadesi verilen bir uçak, kalkış kleransıya birlikte derhal kalkışa hazır olmalıdır. Bu koşulu karşılayamayacak olan uçağın pilotu, piste giriş müsaadesini takiben durumu ilgili ATC unitesine bildirmekle yükümlüdür.

d) Taking all safety measures and controlling FOD before engine test activity on related areas is under the responsibility of the respective companies.

2. TRAINING and TEST FLIGHTS

Due to heavy traffic, all kind of landing and take-off activities of training and test purpose including traffic patterns, instrument landing and touch-and-go are accepted with permission in advance.

3. GROUND MOVEMENT

The instructions given by ATC should be implemented in a timely and proper manner. RTF communications should be short, precise, clear and comprehensive.

4. LIMITATIONS ON USE OF AERODROME

- Available to: Unless the ATC unit have not declared otherwise, the flight course for RWY 11L shall be from North.

- if needed, follow-me service will be provided in low visibility conditions, guidance will be done by ATC.

5. DEPARTURES

Pilots shall contact with Clearance Delivery as follows;

a) Call sign + Stand Position + Code confirming ATIS message received

b) Traffic granted with push-back and engine start-up permissions must start push-back within 1 minute at the latest, otherwise estimated start-up time shall be instructed by ATC

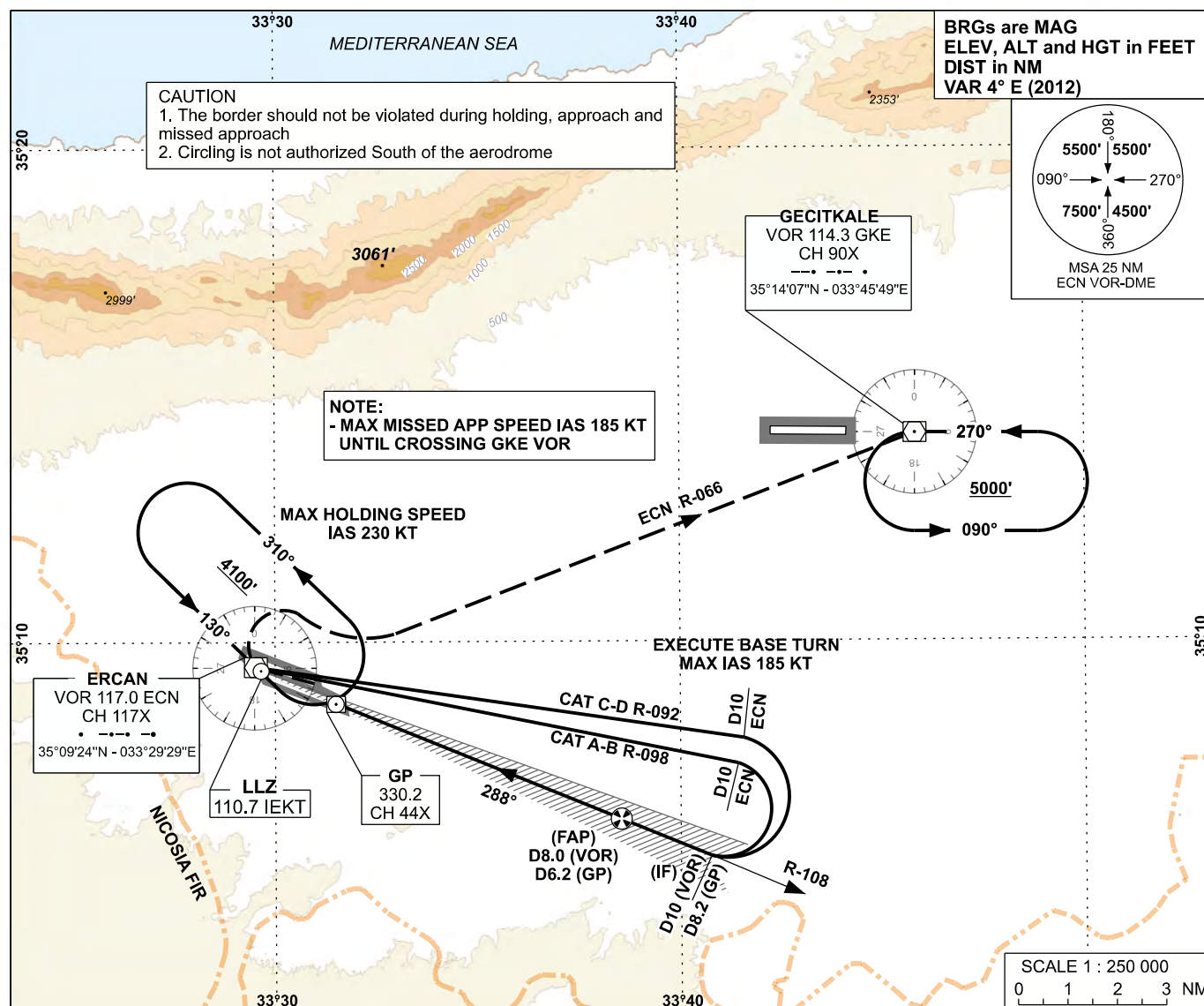
c) Pilots must have accomplished all required cockpit checks for take-off before entering RWY, and hence restrained their final checks only to minimum for take-off when entered the RWY. Pilots are deemed to react to the take-off clearances within 10 seconds at the latest. Otherwise ATC, in order to prevent the redundant RWY occupation, has the authority to withdraw the aircraft from the take-off course and re-direct it to the end of departure sequence.

d) Pilots, granted line up clearance, must be ready to depart immediately after they receive take off clearance. Pilot-in command who is unable to comply with this requirement shall notify the relevant ATC unit, just after receiving the line-up clearance.

LCEN AD 2.21 NOISE ABATEMENT PROCEDURES - NIL

INSTRUMENT
APPROACH
CHART - ICAO

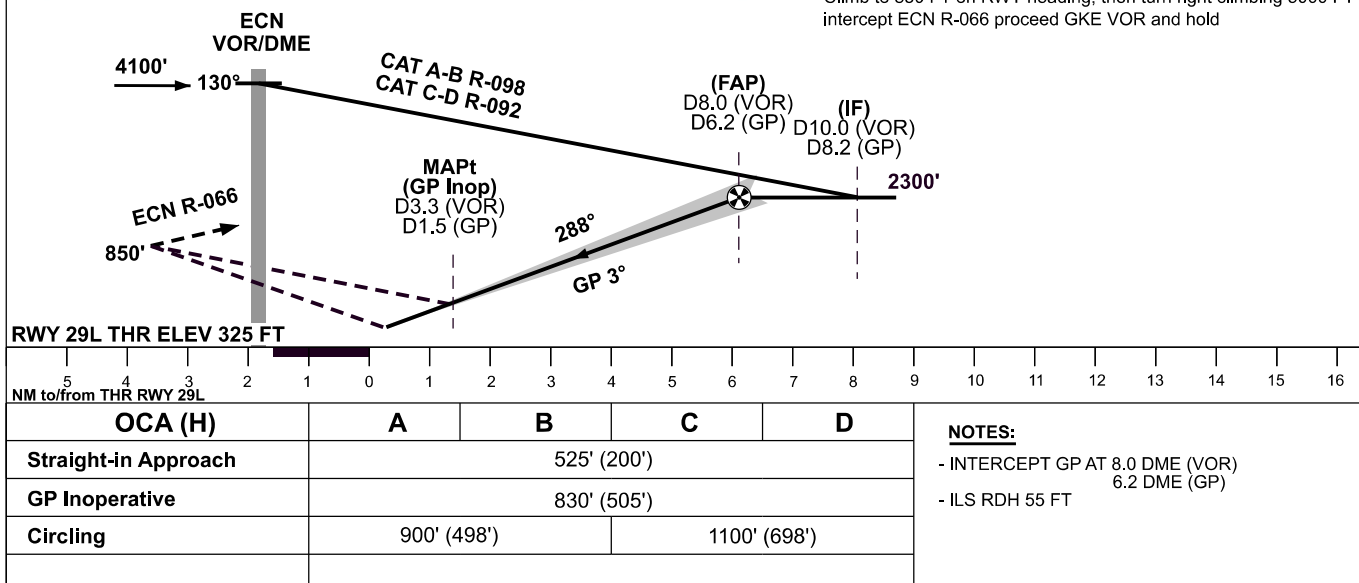
APP	127.750	AD ELEV	402 FT
TWR	120.450 - 120.250 - 120.375	TRANSITION ALTITUDE 6000 FT	
ATIS	118.350		

LEFKOŞA/ERCAN
ILS/DME
RWY 29L

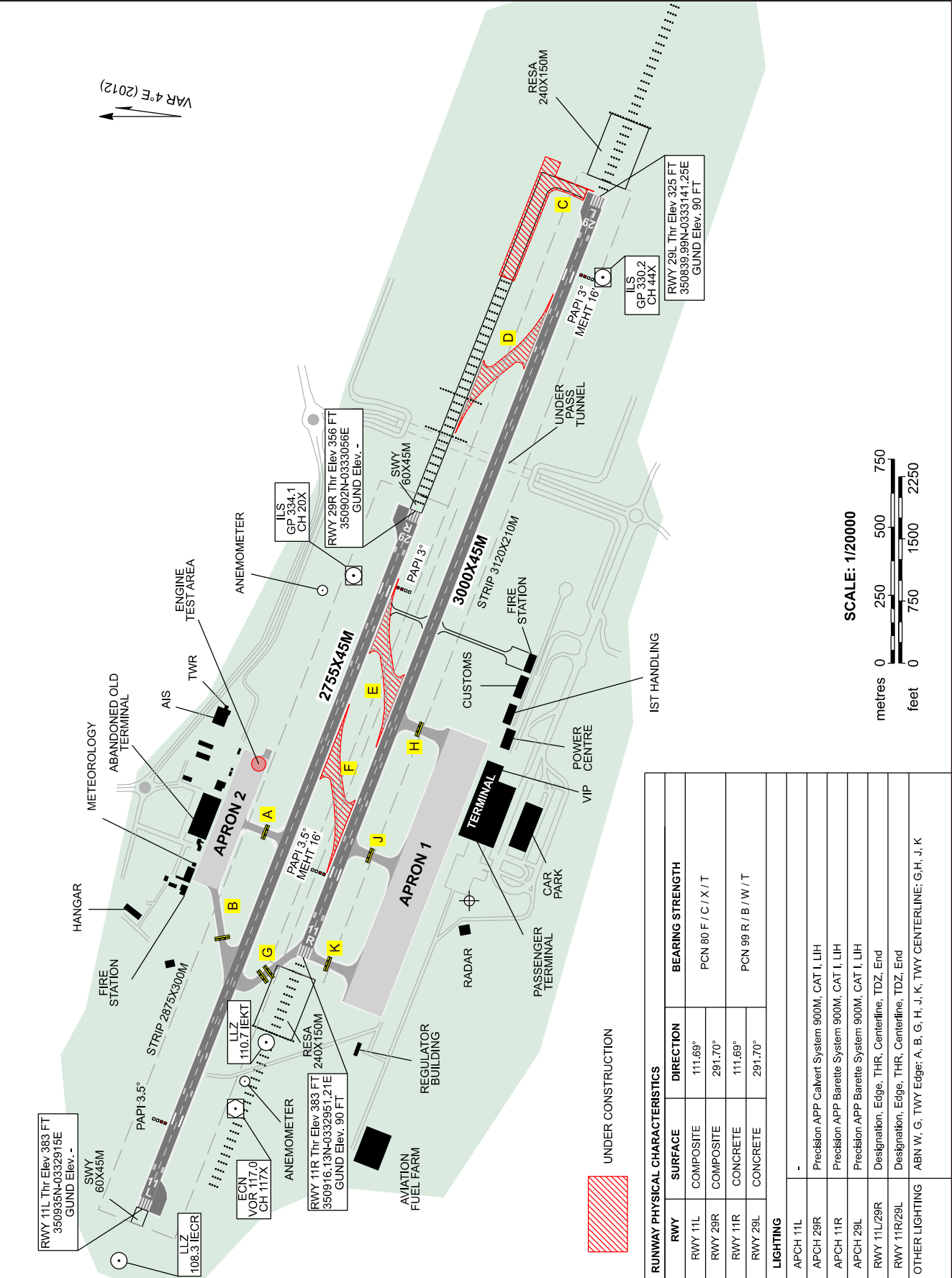
MISSED APPROACH

Max missed approach speed IAS 185 KT until crossing GKE VOR.
Climb to 850 FT on RWY heading, then turn right climbing 5000 FT
intercept ECN R-066 proceed GKE VOR and hold

CHANGE: PROFILE VIEW ALTITUDE

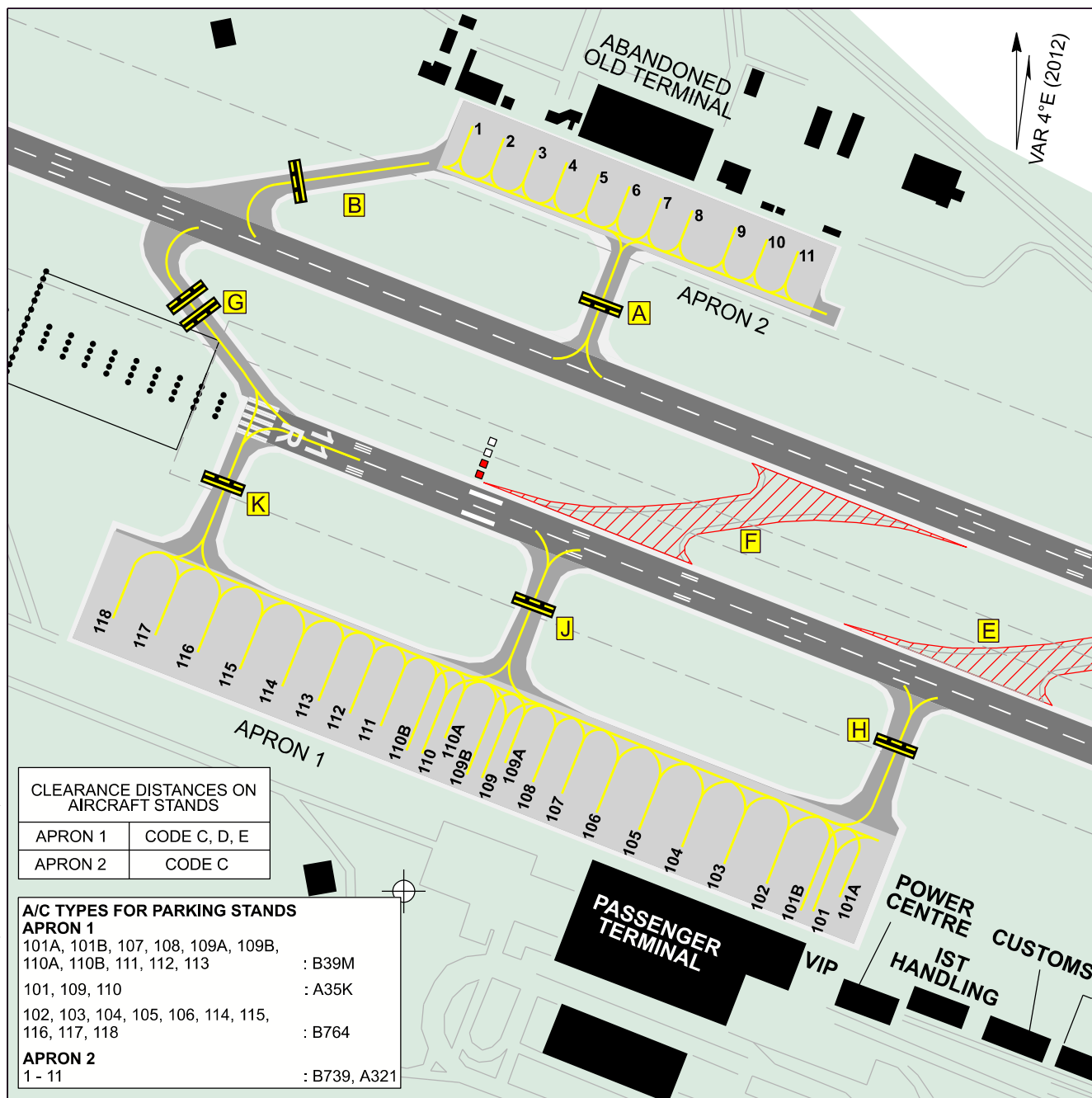


CHANGE: PASSENGER TERMINAL, IST HANDLING, CUSTOMS & ABANDONED OLD TERMINAL BUILDINGS



AIRCRAFT
PARKING/DOCKING
CHART - ICAOELEVATION
APRON 1 : 114M
APRON 2 : 114M

TWR : 120.450 - 120.250 - 120.375

LEFKOŞA/
ERCAN

INS COORDINATES FOR AIRCRAFT STANDS

APRON 1	
101A	35°08'55.67"N - 033°30'21.89"E
101	35°08'55.11"N - 033°30'20.45"E
101B	35°08'55.17"N - 033°30'19.86"E
102	35°08'56.33"N - 033°30'18.06"E
103	35°08'57.05"N - 033°30'15.86"E
104	35°08'57.77"N - 033°30'13.66"E
105	35°08'58.50"N - 033°30'11.46"E
106	35°08'59.22"N - 033°30'09.26"E
107	35°09'00.08"N - 033°30'07.49"E
108	35°09'00.57"N - 033°30'06.00"E
109A	35°09'01.37"N - 033°30'04.54"E
109	35°09'00.72"N - 033°30'03.36"E
109B	35°09'00.85"N - 033°30'02.56"E
110A	35°09'02.39"N - 033°30'01.46"E
110	35°09'01.74"N - 033°30'00.28"E
110B	35°09'01.86"N - 033°29'59.48"E
111	35°09'02.93"N - 033°29'58.13"E
112	35°09'03.46"N - 033°29'56.54"E

APRON 2	
113	35°09'03.98"N - 033°29'54.94"E
114	35°09'04.55"N - 033°29'53.02"E
115	35°09'05.27"N - 033°29'50.84"E
116	35°09'05.98"N - 033°29'48.66"E
117	35°09'06.70"N - 033°29'46.48"E
118	35°09'07.41"N - 033°29'44.29"E

APRON SURFACE

APRON 1 : CONCRETE

APRON 2 : CONCRETE

APRON STRENGTH

APRON 1 : PCN 99 R/B/W/T

APRON 2 : PCN 100 R/D/X/T

TWYs SURFACE

A : ASPHALT

OTHER TWYs : CONCRETE

TWYs STRENGTH

A, B : PCN 80 F/C/X/T

OTHER TWYs : PCN 99 R/B/W/T

TWY G

SURFACE : ASPHALT

STRENGTH : PCN 83 F/C/X/T FOR 131 M FROM 11L/29R RUNWAY JUNCTION, THE REST IS CONCRETE, PCN 99 R/B/W/T

CHANGE: ABANDONED OLD TERMINAL, PASSENGER TERMINAL, IST HANDLING, CUSTOMS BUILDINGS

LCIK AD 3.1 HELIPORT LOCATION INDICATOR AND NAME**LCIK - KARTER HELIPORT****LCIK AD 3.2 HELIPORT GEOGRAPHICAL AND ADMINISTRATIVE DATA**

1	Heliport reference point coordinates and site at heliport	351633N - 0331602E
2	Direction and distance from (city)	7 NM (13 KM) NW of Lefkoşa
3	Elevation/Reference temperature	772 FT (235.30 M) / 36°C / 0°C
4	Geoid Undulation at AD ELEV PSN	91 FT
5	MAG VAR/Annual change	5.26°E (2020) / Annual change 4.5°
6	Heliport Administration, address, telephone, telefax, telex, AFS	Güvenlik Kuvvetleri Havacılık Birlik Komutanlığı 11007 Dikmen / GİRNE Tel : +90 392 234 6940 Fax : +90 392 234 6460 AFS : LCIKZTZX
7	Types of traffic permitted (IFR/VFR)	IFR/VFR
8	Remarks	1. Sivil Havacılık işletmelerince uçuş planlanması durumunda Güvenlik Kuvvetleri Komutanlığından ön müsaade alınması gerekmektedir. / Aircraft operators who will fill Flight Plans are required first to obtain the authorization of TRNC Security Forces Command. 2. IFR trafikler Ercan Havaalanına alet alçalması yapacak ve VFR olduktan sonra VFR ı muhafaza ederek Karter heliporta inecektir. / IFR traffics will approach to LCEN (Ercan). After obtaining VFR conditions, they will land at Karter heliport.

LCIK AD 3.3 OPERATIONAL HOURS

1	AD Operator	As Heliport Administration
2	Customs and immigration	Not Available
3	Health and sanitation	During Operation Hours
4	AIS Briefing Office	Operate via LCEN
5	ATS Reporting Office (ARO)	Operate via LCEN
6	MET Briefing Office	Operate via LCEN
7	ATS	As Heliport Administration
8	Fueling	During Operation Hours
9	Handling	As Heliport Administration
10	Security	H24
11	De-icing	-
12	Remarks	NIL

LCIK AD 3.4 HANDLING SERVICES AND FACILITIES

1	Cargo-handling facilities	60 KVA (28,5VDC,1200AMP) and 60 KVA (115-200 VAC, 1600 AMP, 400 HZ) EPU, 60 KVA (28,5VDC,1200AMP) and 60 KVA (115-200 VAC, 1600 AMP, 400 HZ) EPU, 2 Tractors
2	Fuel/oil types	JP-8 (Limited)
3	Fuelling facilities/capacity	1 Truck (20600 Liters), 1000 Liters/Min SP
4	De-icing facilities	-
5	Hangar space for visiting helicopter	2 Semi-closed Hangar
6	Repair facilities for visiting helicopter	-
7	Remarks	NIL

LCIK AD 3.5 PASSENGER FACILITIES

1	Hotels	In Lefkoşa
2	Restaurants	In Dikmen
3	Transportation	-
4	Medical facilities	First aid at the site, Hospitals in Lefkoşa
5	Bank and Post Office	In Lefkoşa
6	Tourist Office	In Lefkoşa
7	Remarks	NIL

LCIK AD 3.6 RESCUE AND FIRE FIGHTING SERVICES

1	Heliport category for fire fighting	H2
2	Rescue equipment	Crash-Fire-Rescue (CFR) team is available in Summer time BTN 0500-1400 and in Winter time BTN 0600-1500
3	Capability for removal of disabled helicopter	-
4	Remarks	NIL

LCIK AD 3.7 SEASONAL AVAILABILITY - CLEARING - NIL

LCIK AD 3.8 APRONS, TAXIWAYS AND CHECK LOCATIONS DATA

1	Apron/helicopter stands surface and strength	Landing Area Dimensions: 50X50 M; Surface: Asphalt; Strenght: - Parking Area Dimensions: 60X100 M; Surface: Concrete; Strenght: -
2	Ground taxiway width, surface and designation	Width: 22 M; Surface: Concrete Designations : T1, T2, T3, T4 parking areas and edge markings
3	ACL location and elevation	-
4	VOR checkpoints	-
5	INS checkpoints	-
6	Remarks	NIL

LCIK AD 3.9 MARKINGS AND MARKERS

1	Use of aircraft stand ID signs, TWY guide lines and visual docking/parking guidance system of aircraft stands	Centerline markings, Edge Markings
2	RWY and TWY markings and LGT	Centerline markings, Edge Markings
3	Stop bars and Runway Guard Lights	-
4	Other Runway Protection Measures	-
5	Remarks	NIL

LCIK AD 3.10 HELIPORT OBSTACLES

Obstacle Type	Coordinates	Elevation at top (FT)	Height (FT)	Obstacle Lighting	Type and color of lighting
High Energy Transfer Lines	351520N 0331623E	752 FT	75	Yes	Red
Mountain Area	351817N 0331529E	2630 FT	-	-	-

LCIK AD 3.11 METEOROLOGICAL INFORMATION PROVIDED

1	Associated MET Office	Ercan MET Office
2	Hours of service MET Office outside hours	Operate via Ercan MET Office
3	Office responsible for TAF preparation Periods of validity	Operate via Ercan MET Office
4	Type of landing forecast Interval of issuance	-
5	Briefing/consultation provided	Personel Consultation
6	Flight documentation Language(s) used	TU-EN
7	Charts and other information available for briefing or consultation	-
8	Supplementary equipment available for providing information	Telefax and Internet
9	ATS units provided with information	Ercan Tower
10	Additional information (limitation of service, etc.)	-

LCIK AD 3.12 HELIPORT DATA

1	Heliport type	Surface Level
2	TLOF dimensions	50X50 M
3	FATO, GEO and MAG bearings	For 016°: 016° GEO-021° MAG For 340°: 340° GEO-345° MAG
4	FATO dimensions and SFC type	TLOF: 50X50 M Asphalt
5	TLOF, SFC and BRG strength	Asphalt

6	Coordinates of geometric centre TLOF or THR of FATO	TLOF: 351633N - 0331602E Touch down and Lift-off area.
7	TLOF/FATO, elevation and slope	TLOF: 772 FT (235.30 M)
8	Safety area dimensions	50X50 M
9	HEL CWY dimensions	-
10	Obstacle-free sector	-
11	Remarks	Aircraft who provide to criteria in Table 3.13 can land and take-off.

LCIK AD 3.13 DECLARED DISTANCES

	TODAH (M)	RTODAH (M)	LDAH (M)	Remarks
	1	2	3	4
FATO 16: 1100M	1090 M	1090 M	1090 M	NIL
FATO 34: 1100M	1090 M	1090 M	1090 M	

LCIK AD 3.14 APPROACH AND FATO LIGHTING - NIL

LCIK AD 3.15 OTHER LIGHTING, SECONDARY POWER SUPPLY

1	Heliport BCN location and characteristics Hours of operation	Heliport BCN available on top of TWR Operating Hours
2	WDI location and LGT	-
3	TWY edge and centre line lighting	-
4	Secondary power supply/switch-over time	-
5	Remarks	NIL

LCIK AD 3.16 ATS AIRSPACE

1	Designation and lateral limits	Centered (TWR) 351635.60N-0331604.93E radius 4 NM
2	Vertical limits	1500 FT AMSL/SFC
3	Airspace classification	-
4	ATS unit call sign Language(s)	KARTER TWR TU-EN
5	Transition altitude	TA 6000
6	Remarks	NIL

LCIK AD 3.17 ATS COMMUNICATION FACILITIES

Service designation	Call sign	Frequency	Hours of operation	Remarks
1	2	3	4	5
TWR	Karter Tower	132.0 MHz 125.6 MHz	Summer 0500-1400 Winter 0600-1500	NIL

LCIK AD 3.18 RADIO NAVIGATION AND LANDING AIDS - NIL

LCIK AD 3.19 YEREL TRAFİK DÜZENLEMELERİ/LOCAL TRAFFIC REGULATIONS

HELİPORT VE TAKSİYOLLARINDAN İSTİFADE USULLERİ

1- GENEL:

A- Yakıt tankerleri ve özel müsaadeli araçlar dışındaki araçların aprona izinsiz girmelerine müsaade edilmez.

B- Hava araçları motor çalıştırdıktan sonra aprona araç girmesine müsaade edilmez.

C- Tecrübe için, hava araçlarına sadece 4 numaralı park alanında (T4) motor çalıştırmaya müsaade edilir.

2- HELİPORTTAKİ HELİKOPTERLERİN HAREKET TARZI:

A- Bütün hava araçları motor çalıştırma, taksi, hover, kalkış, iniş ve motor susturma için kuleyle irtibat kuracaklardır.

B- Hava araçlarının park yerinden ve taksi yolundan kalkışına müsaade edilmez.

C- Apronda birden fazla hava aracına taksi müsaadesi verilmez. Taksi sürati maksimum 5 knot tır.

D- Hava araçları apronda diğer trafikleri takip etmek zorundadır.

E- Hava araçları motor çalıştırdıktan sonra kalkış noktasına geçmek için Karter heliport kuleden müsaade almak zorundadır.

F- Kalkışlar Karter Kule Müsaadesi ile yalnız kalkış panelinden ve belirtilen istikamete yapılır.

G- İnişini tamamlayan hava araçları park yerine taksi için heliport kuleden müsaade almak zorundadır.

3- YER VASITALARI:

A- Aprondaki kara vasıtalarının hızı 5 kilometre saati geçemez.

B- Araç şoförleri hava araçlarını takip etmek zorundadır.

C- Araçların apronda bırakılmasına müsaade edilmez.

D- Gece şartlarında hiçbir aracın farlarını hava araçlarına doğru kullanmasına müsaade edilmez. Hava aracı çalışırken sadece park lambalarının yakılmasına müsaade edilir.

USING HELIPORT AREA AND TAXIWAYS

1- GENERAL:

A- Vehicles are not allowed to enter to the apron and TWY without getting permission, except the fuel trucks and the authorized vehicles.

B- After starting engines vehicles are not allowed to enter to apron.

C- Engines can only be started on purpose of test while the aircraft are on stand number 4 (T4) in parking area

2- RULES FOR THE HELICOPTERS IN THE HELIPORT:

A- All the aircraft must get in contact with heliport tower for engine starting, taxiing, hover, take-off, landing and engine shut-down.

B- Aircraft are not allowed to take-off while over parking area and TWY.

C- Aircraft are not allowed to taxi on the apron if there is more than one aircraft at the same time. Taxi speed is max. 5 knots.

D- Aircraft must control each other on the apron.

E- After starting engines, aircraft must get permission from the Karter heliport tower before taxiing to TLOF.

F- Take-off is permitted only from TLOF with the take-off permission of Karter TWR and only for permitted direction.

G- From the TLOF to park areas aircraft must get permission from the heliport tower.

3- GROUND VEHICLES:

A- For the vehicles on the apron permitted limit is 10 kilometers per hour.

B- Drivers must control up the aircraft.

C- It is not permitted to park vehicles on the apron.

D- At nights the vehicles are not allowed to light their headlights through the aircraft. It is permitted only lighting park lights when aircraft have started engines.

LCIK AD 3.20 GÜRÜLTÜ ÖNLEME USULLERİ/NOISE ABATEMENT PROCEDURES- NIL

LCIK AD 3.21 UÇUŞ USÜLLERİ

FLIGHT PROCEDURES

HELİPORT TRAFİĞİ

HELIPORT TRAFFIC

1- GENEL KAİDELER:

1- GENERAL PROCEDURES:

A- Eğitim uçuşları; yönergeler ve özel emirlerin doğrultusunda eğitim sahaları ve/veya kontrol sahası içerisinde yapılacaktır.

A- Training flights are applied in the training areas and/ or within the control zone in accordance with the instructions and special orders.

B- Hiçbir hava aracı uçuş emniyet kurallarını ihlal etmeyecektir.

B- Aircraft can not violate flight safety rules

C- IFR şartlarda uçacak hava araçları Ercan yaklaşmanın talimatlarına riayet edeceklerdir. VFR şartları temin ettikten sonra Karter Heliportuna görerek yaklaşacaktır.

C- Aircraft which are flying in the IFR conditions should execute the ERCAN APP instructions and then should execute visual approaching procedures for Karter Heliport.

D- Hava Araçları, Karter Meydanı 1500 AGL üzeri irtifada Ercan Yaklaşma 127.750 Mhz veya 126.700 Mhz ile irtibat kurulacaktır.

D- All aircraft above 1500 AGL at Karter Heliport will contact with Ercan Approach via 127.750 Mhz or 126.700 Mhz.

2- HELİKOPTER MEYDAN TRAFİĞİ:

2- HELICOPTER TRAFFIC:

Karter Heliportu trafik paterni kullanılacaktır.

Karter Heliport traffic pattern will be executed.

3- ACİL DURUMLAR:

3- EMERGENCY PROCEDURES:

A- Apron üzerinde taksideki hava aracı arızasında önce mecburi iniş tamamlanıp sonra kule ikaz edilecektir.

A- If an aircraft has a defect during the taxing on the apron. It should firstly land as soon as possible and then inform the tower.

B- Kuleden yardım isteyen arızalı hava aracına Kule iniş önceliği verir. Bu durumda diğer hava araçları iniş bölgesinden mümkünse uzaklaştırılır.

B- The tower gives landing priority to the aircraft in emergency. In this case the other aircraft on the TLOF should be removed if it is possible.

4- HARIÇTEN GELECEK HAVA ARAÇLARININ HAREKET TARZI:

4- THE PROCEDURES FOR THE VISITOR AIRCRAFT:

A- Hariçten gelecek hava araçları Karter Meydan Yönergesi'ne ve kulenin vereceği talimatlara uymak zorundadır.

A- Arrival aircraft are to follow instructions of Karter Aerodrome and directions of the tower.

B- Misafir hava araçları kule operatörünün vereceği talimata göre uçuş hattı görevlisi tarafından park ettirilir.

B- The visitor aircraft are parked by marshal according to the directions given by the tower.

C- Misafir hava aracının pilotu geliş sebebi ve ihti- yaçları hakkında bilgi verir. Uçuş planını heliport mey- dan harekate verir. Uçuş; heliport meydan hareket per- sonelince kapatılır.

C- The pilot of the visitor aircraft should inform the reason of his coming and his needs. Before leaving, he should fill in the flight plan and submit it to the heliport authority. Flights are ended by the heliport authority.

D- Karter Heliportuna inmek isteyen hava araçları 3 gün önceden Güvenlik Kuvvetleri Komutanlığı'ndan izin almak zorundadır.

D- The aircraft which want to land to Karter Heliport have to get permission from TRNC Security Forces Command prior 3 days.

LCIK AD 3.22 ADDITIONAL INFORMATION

KISALTMALAR:

TLOF	: TEMAS VE KESİLİŞ NOKTASI
O/R	: İSTEK ÜZERİNE
PN	: ÖNCEDEN BİLDİRMEK SURETİYLE
FATO	: İNİŞ-KALKIŞ ALANI
SP	: TEK NOKTA
H2	: H2 KATEGORİSİ (15M - 24M ARASI UZUNLUKTAKİ HAVA ARACI
P	: ŞAHSİ DEĞERLENDİRME
T	: TELEFON
D	: ŞAHSİ BRİFİNG VERİLERİ
C	: HARİTA
CR	: KESİT
TB	: ÇİZELGE
W	: METEOROLOJİ HARİTASI
CFC	: YÜZEY
TODAH	: MEVCUT KALKIŞ MESAFESİ
RTODAH	: MEVCUT HIZLANIP DURMA MESAFESİ
LDAH	: MEVCUT İNİŞ MESAFESİ
BCN	: BEACON
WDI	: RÜZGAR YÖN GÖSTERGECİ
LGT	: LAMBA
ACL	: ALTİMETRE KONTROL NOKTASI
TRNC	: KUZEY KIBRIS TÜRK CUMHURİYETİ

ABBREVIATIONS:

TLOF	: TOUCH DOWN AND LIFT-OFF AREA
O/R	: ON REQUEST
PN	: PRIOR NOTICE
FATO	: FINAL APPROACH AND TAKE-OFF AREA
SP	: SINGLE POINT
H2	: FROM 15 M UPTO BUT NOT INCLUDING 24 M
P	: PERSONNEL CONSULTATION
T	: TELEPHONE
D	: SELF-BRIEFING DISPLAY
C	: CHARTS
CR	: CROSS-SECTIONS
TB	: TABULAR FORMS
W	: SIGNIFICANT WEATHER CHART
CFC	: SURFACE
TODAH	: TAKE-OFF DISTANCE AVAILABLE
RTODAH	: REJECTED TAKE-OFF DISTANCE AVAILABLE
LDAH	: LANDING DISTANCE AVAILABLE
BCN	: BEACON
WDI	: WIND DIRECTION INDICATOR
LGT	: LIGHT
ACL	: ALTIMETER CHECK LOCATIONS
TRNC	: TURKISH REPUBLIC OF NORTHERN CYPRUS

LCIK AD 3.23 CHARTS RELATED TO KARTER HELIPORT

Aerodrome/Heliport Chart	AD 3 LCIK ADC
--------------------------	---------------

AERODROME/HELIPORT
CHART
ICAO

35°16'33"N
033°16'02"E
AD ELEV
772 FT

TWR : 132.000 - 125.600

GİRNE/
KARTER
HELIPORT

